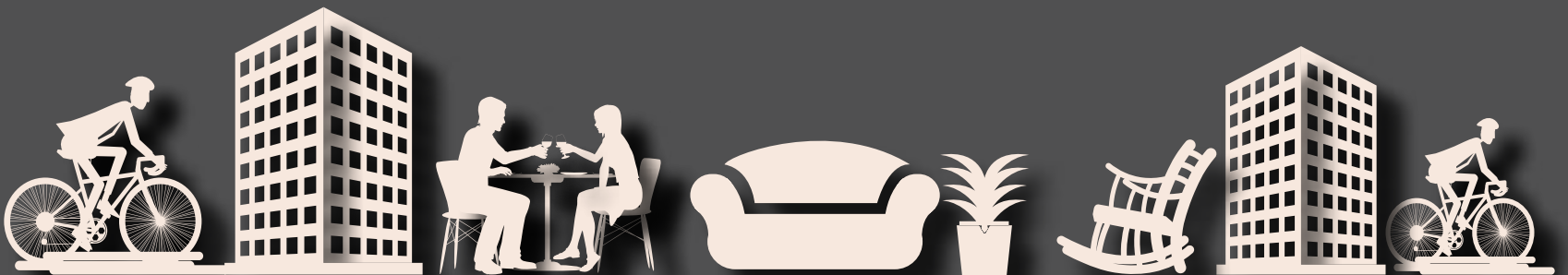


NYATI EVOLVE

2 & 3 RHK PREMIUM HOMES
MAGARPATTA





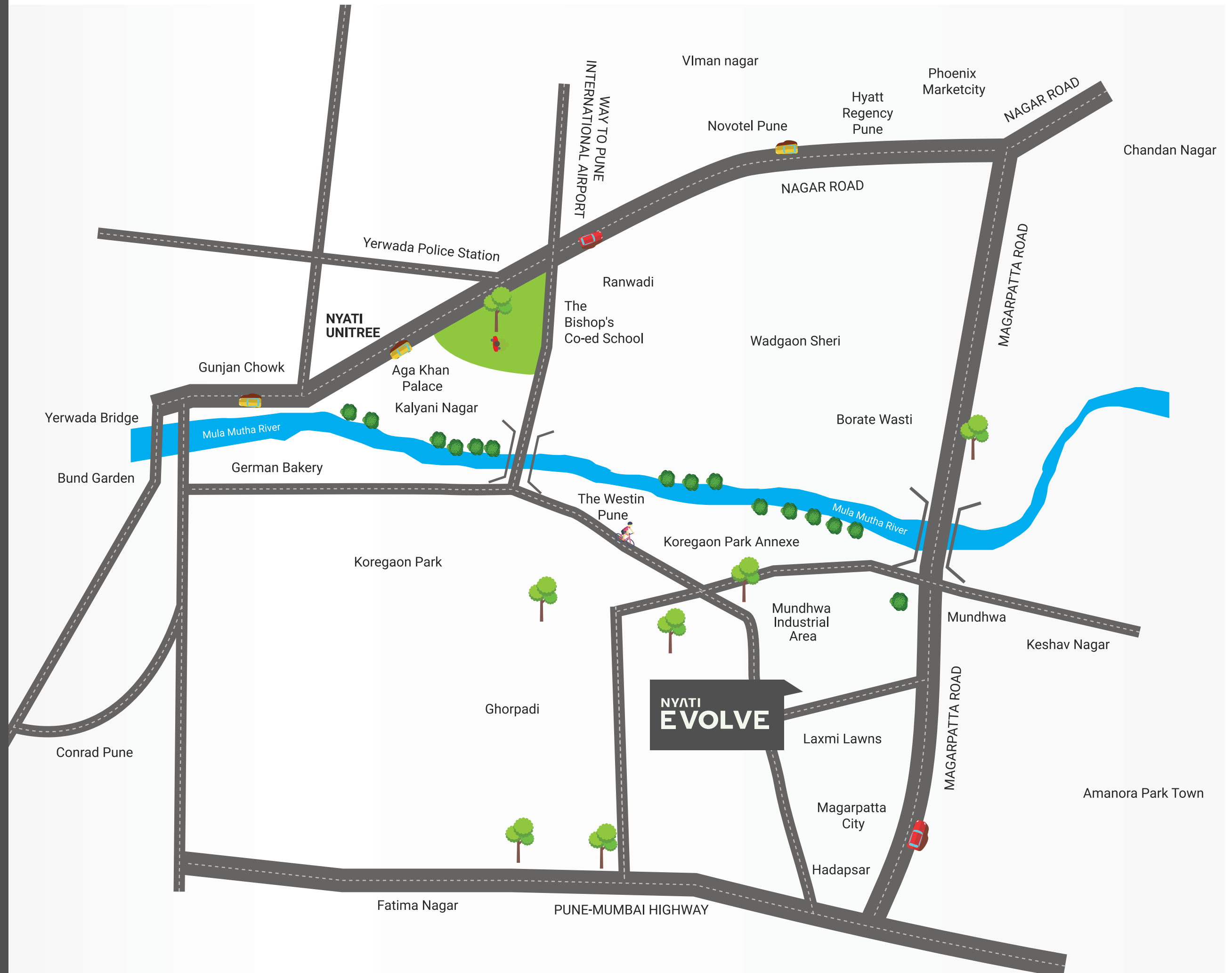
OPEN THE DOORS TO AN EASY CONNECTIVITY.

Welcome to the golden locale of East Pune! Nyati Evolve is connected to the city's most happening locales. Close to Magarpatta City, Amanora Park Town and Koregaon Park, the area has developed into a glamorous locale of its own with all the enticing attributes of a truly ultra-urban neighbourhood!



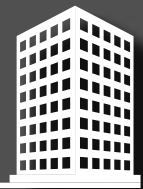
KEY DISTANCES

- » EON IT Park - 4.2 km
- » World Trade Center - 3.5 km
- » Amanora Mall - 1.7 km
- » Phoenix Mall - 5.9 km
- » Seasons Mall - 1.6 km
- » Nitesh Hub - 4.8 km
- » Kalyani IT Park - 5 km
- » Airport - 8.1 km



OPEN THE DOORS TO A NEW LIFESTYLE!

Purposeful recreation is a way of life at Nyati Evolve, and it is not just limited to internal frills and glamour. At the vibrant center of a crème-de-la-crème neighbourhood, Nyati Evolve is set to enjoy the allures of swanky malls, the town's finest restaurants and all the glitter of a modern locale. Closely connected to business and transportation hubs, it is surrounded by the best opportunities. Add to it the well-developed infrastructure of the locale, and you are in for a life full of recreational joys!





ARTISTICIMPRESSION

OPEN THE DOORS TO NEW URBAN LIVING.

Nyati Evolve is about living large and a home that inspires it. It is a home that understands your needs and rises to your expectations every time. It is a home that is an amalgamation of all the qualities you hold important. From space to specifications, everything here is designed to amplify your experience of a premium urban living.

Close to work: Close to major IT & commercial hubs
Close to recreation: Amanora Mall, Seasons Mall & Phoenix Mall nearby
Close to conveniences: Renowned schools & hospitals nearby





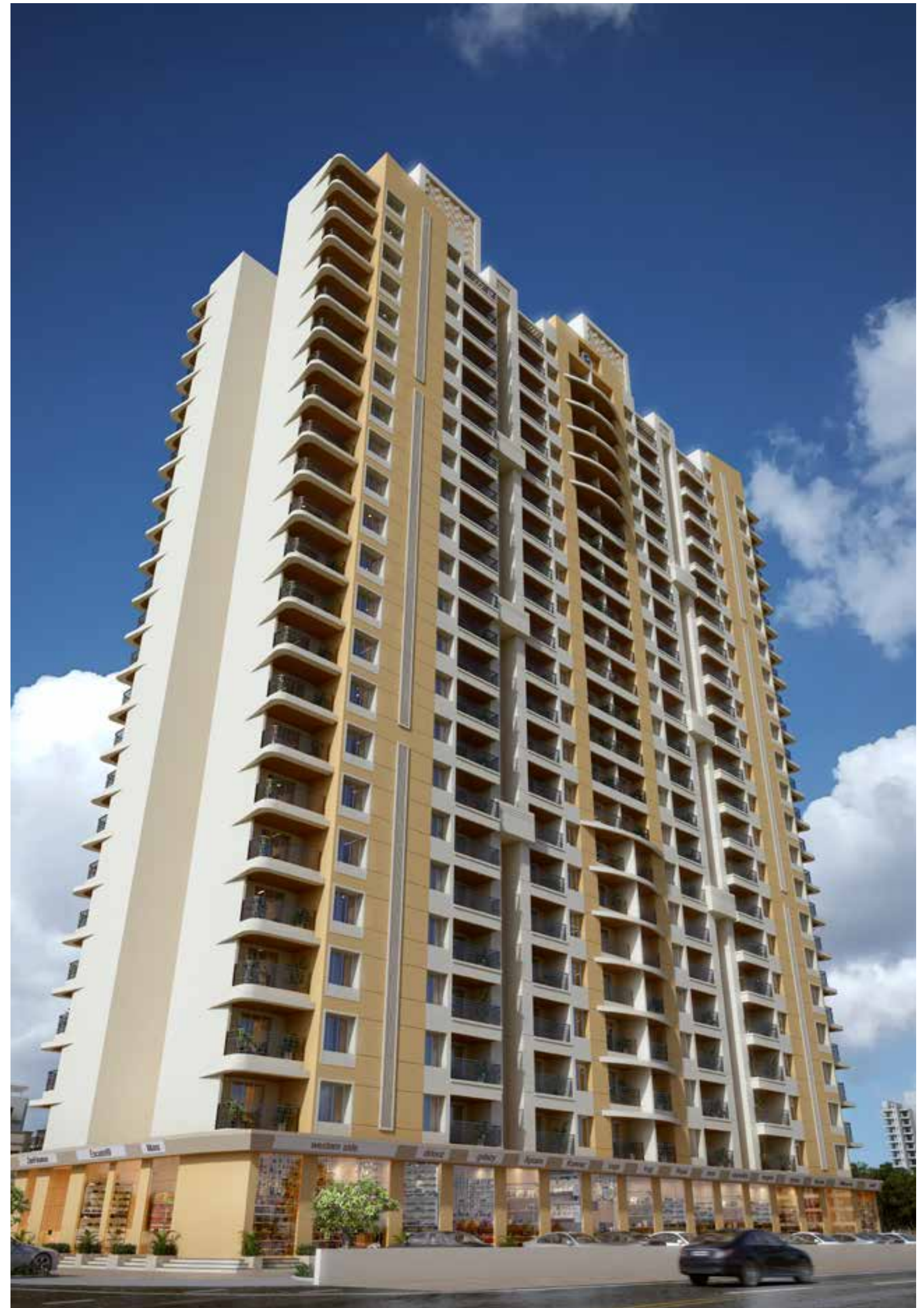
OPEN THE DOORS TO CONTEMPORARY COMFORTS.

A lifestyle befitting your standards, Nyati Evolve houses the best of contemporary comforts requisite for an exuberant life. A thoughtful design adds to your comforts in every corner and your happiness in every step. Equipped with the modern-most living features, it is a home that fits your imagination.



COMMON AREAS, AMENITIES & FACILITIES OF NYATI EVOLVE I & II

- » Main entrance gate with security cabin & compound wall
- » Landscaped garden with lawns and flower beds
- » Generator back-up for passenger elevators, pumps,
common lights and club house
- » Club house
- » Children's play area with play equipments
- » LED fixtures for common areas
- » Internal tremix concrete driveway with paver blocks
- » STP as per statutory requirements
- » STP recycled water for gardening and flushing
- » Wet garbage disposal through organic waste converter
- » Rain water harvesting
- » Fire fighting system as per statutory requirements
- » Provision of stacked car parkings at basement 01 & stilt level
- » Garbage chute as per plan
- » Provision of piped gas network system





CONCEPTUAL IMAGE

SPECIFICATIONS EVOLVE I & II



STRUCTURE, MASONARY WALLS & PLASTER/PAINTS

- » RCC framed structure
- » External wall with sand faced plaster having textured finish and acrylic paint
- » Internal walls & ceiling - Gypsum finished walls & putty finished ceiling



FLOORING & DADO TILES

- » Vitrified tiles for flooring. Brand – Zealtop/Kajaria Somany Asian/Nitco
- » Matt finished tiles in common toilets. Brand - Kajaria/Somany/Nitco/Asian
- » Coloured glazed Ceramic tile dado up to 2.1m Brand - Kajaria/Somany/Nitco/Asian.



KITCHEN AREA

- » CPVC concealed plumbing lines
- » Granite top kitchen platform with SS sink. Brand – Nirali/Franky/Futura



TOILETS

- » CPVC concealed plumbing with hot & cold arrangement inside master toilet for wall mixer and wash basin. Brand – Finolex/Ajay FlowGuard/Prince/Supreme
- » CPVC concealed plumbing inside common/ bedroom toilet for wash basin and with hot & cold arrangements for wall mixer only. Brand – Finolex/Ajay FlowGuard/Prince/Supreme
- » CP fittings. Brand - Jaguar/Grohe/Isenberg/ Kohler/Shell/American Standard
- » Sanitary wares. Brand – RAK/Hindware/Jaguar/ Kohler/Grohe/American Standard
- » Solar water heating system inside master bedroom toilet (Time, temperature and quantum of hot water subject to climate conditions)



ELECTRIFICATION & CABLING

- » Concealed copper wiring with modular switches in all flats. Brand for electrical switches - Legrand/ Schneider/Anchor. Brand for electrical wiring – Polycab/Finolex/R.R.Kabel/Havells

- » Provision for telephone point in hall & master bedrooms
- » TV point in hall and all bedrooms
- » Split AC electrical points in all bedrooms
- » Electrical points for washing machine, water purifier and fridge
- » Generator back-up for entire flat excluding 15 amp power points



DOORS

- » Main door frame - Wooden - Red Meranti
- » Main door shutter - Both side veneer main door shutter with accessories
- » Bedroom frame & doors - Laminated door shutters with Red Meranti door frame
- » Toilet doors - Laminated door shutters with granite door frame
- » Eye level terrace door - 3 tracks UPVC profile sliding doors with mosquito net



WINDOWS

- » 3 track UPVC profile sliding windows with mosquito net
- » PVC louvered windows for toilets



PAINTING

- » Internal walls & ceiling - Oil Bound Distemper. Brand - Dulux/ICI/Asian/Berger/Nerolac
- » External walls - Acrylic paint. Brand - Asian/Dulux/ Berger/New world Paints/Jotun/Dr. Fixit
- » Inside toilet & ceiling - Oil paint above tile dado



LIFTS

- » Lifts as per plan. Brand - Kone/Otis/Schindler Johnson



HOME AUTOMATION & SECURITY

- » Lights & fans operated through touch screen panels
- » Main door security having video phone



COMMON AREAS, AMENITIES & FACILITIES OF NYATI EVOLVE I & II

SHOPS

- » Vitrified flooring tiles with skirting inside shops.
Brand – Zealtop/Kajaria/Somany/Asian/Nitco
- » Internal walls & ceiling – Gypsum finished walls & Putty finished ceiling
- » Shop door – MS rolling shutter

ELECTRIFICATION & CABLING

- » Concealed copper wiring with modular switches in all shops.
Brand for electrical switches - Legrand/Schneider/Anchor
Brand for electrical Wiring – Polycab/Finolex/R.R.Kabel/Havells
- » DB in each shop
- » Generator back-up for only two light points

SHOPS COMMON TOILET

- » Toilets flooring – Matt finish ceramic flooring. Brand – Kajaria/Nitco/Asian/RAK/Itaca.
- » Toilet Dado - Coloured glazed ceramic tile dado up to 2.1 m.
Brand - Kajaria/Nitco/Asian/RAK/Itaca
- » CPVC concealed plumbing. Brand – Finolex/Prince/Supreme/Astral
- » CP fittings. Brand - Jaguar/Grohe/Isenberg/Kohler
- » Sanitary ware. Brand – RAK/Hindware/Jaguar/Kohler
- » Toilet doors - Laminated door shutters with MS door frame



ARTISTICIMPRESSION

NYATI
EVOLVE
 2 & 3 RHK PREMIUM HOMES
 MAGARPATTA



SITE ADDRESS: S. NO. 66/1B, B.G. SHIRKE ROAD, OPP. LAXMI LAWNS,
MAGARPATTA, PUNE - 411036

CORPORATE OFFICE: 6th Floor, Nyati Unitree, Near Gunjan Theatre, Nagar Road,
Yerwada, Pune - 411006
+91 20 6686 3333 | info@nyatigroup.com

MUMBAI:

804, Landmark Platinum, Junction of SV Road and 34th Road, Khar(W), Mumbai - 400 050

DUBAI:

102, Burlington Tower, Opp. Oberoi Hotel, Business Bay, P.O. Box:62396, Dubai, UAE

Call: 99640 41041

nyatigroup.com FOLLOW US ON:      



NYATI EVOLVE MAHARERA REG. No.
Phase I: P52100022030 | Phase II: P52100022029
<https://maharera.mahaonline.gov.in>